

**ELEPHANT BUTTE RESERVOIR**

2003 Lowest Point in Storage: September 14, 2003 4303.27 feet 147,946 acre-foot

2004 Highest Point in Storage: May 31, 2004 4324.34 feet 322,872 acre-foot

Today's Storage: August 19, 2004 4299.62 feet 125,098 acre-foot

2004 Projected Lowest Point in Storage: September 29, 2004 4281.14 feet 45,573 acre-foot

**CABALLO RESERVOIR**

2003 Lowest Point in Storage: September 20, 2003 4126.76 feet 4,428 acre-foot

2004 Highest Point in Storage: July 23, 2004 4351.66 feet 75,513 acre-foot

Today's Storage: July 30, 2004 4150.96 feet 71,926 acre-foot

2004 Projected Lowest Point in Storage: September 30, 2004 4127.04 feet 4,738 acre-foot



## 2004 Rio Grande Project Allocation

### Final Allocation - End of July, 2004

(letter issued August 18, 2004)

Mexico	27,197 AF
Elephant Butte Irrigation District	185,507 AF
El Paso County Water Improvement District # 1	141,240 AF
	<hr/>
[37.98% of a full supply]	353,944 AF *

\* Project water supply available for diversion at the authorized canal headings.

### Final Allocation - August 15, 2003

(letter issued Aug. 21, 2003)

Mexico	26,616 AF
Elephant Butte Irrigation District	165,144 AF
El Paso County Water Improvement District # 1	125,735 AF
	<hr/>
[34.07% of a full supply]	317,495 AF *

\* Project water supply available for diversion at the authorized canal headings.

## **CABALLO RESERVOIR RELEASE TENTATIVE SCHEDULE FOR 2004**

\* actual release dates.

- \* Feb. 26: Release from Elephant Butte Dam to raise Caballo
- \* March 12: Release for EBID's and EP#1's orders
- \* March 19: Release for Mexico's order
- \* April 5: Release shutdown for EP#1
- \* April 10: Release shutdown for EBID
- \* April 19: Release shutdown for Mexico
- \* May 21: Release restart for EP#1 and EBID
- \* May 29: Release restart for Mexico's order on June 1st
- Aug. 22:** Release shutdown for Mexico's end of irrig. season on Aug. 24
- Sept. 15:** Release shutdown for EBID's end of irrigation season
- Sept. 30:** Tentative release shutdown to end irrig. season

**SUMMARY TABLE OF ESTIMATED ALLOCATION FOR 2005**

WTreeers  
8/19/2004

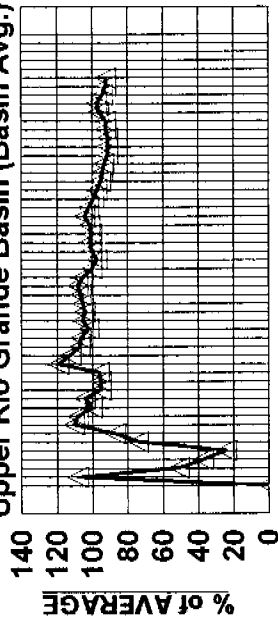
2005 RUNOFF (Mar-Jul) at SAN MARCIAL GAUGES *	Est. Allocation (based on EO September est. storage) **	Estimated Caballo Reservoir Release for Irrigation Season (AF)	Estimated Highest Storage Level at Elephant Butte Reservoir (AF)	Estimated Highest Storage Level at Caballo Reservoir (AF)	Estimated Remaining Credit Waters in Elephant Butte Reservoir (AF)	Estimated Remaining San Juan-Chama Water in Elephant Butte Reservoir (AF)	Estimated Lowest Storage Level at Elephant Butte Reservoir (AF)
95% (543,000 AF)	95% of full supply	725,000	230,000	47,000	0	4,900	85,000 (Aug. 2004)
50% (284,000 AF)	36% of full supply	422,000	281,000	40,000	0	4,900	36,000 (Oct. 1971)
25% (142,000 AF)	26% of full supply	318,000	169,000	40,000	0	4,900	11,000 (Aug. 1954)

\* Normal (average) runoff volume at San Marcial gauging stations (Mar-Jul) is 573,000 AF.

\*\* EO month storage figures based on Reclamation's Rio Grande Project reservoirs operational plan developed on August 18, 2004. Allotments are estimated for an entire irrigation season, and the allotments are made to the Rio Grande Project canal headings. A full supply allotment for an irrigation season is: 494,979 AF to EBID canal headings; 376,862 AF to EP#1 headings; and, 60,000 AF to Mexico's Acequia Madre heading under the 1906 Treaty.

**% OF AVG. TOTAL PRECIPITATION VS TIME**

Upper Rio Grande Basin (Basin Avg.)

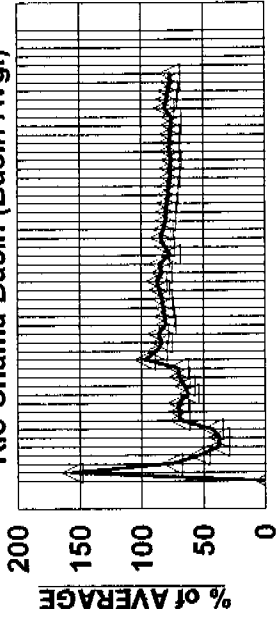


Avg = Avg of  
9 Precip. Sites

10/01  
11/03  
12/08  
01/12  
02/16  
03/22  
04/26  
05/31  
07/05  
08/09  
09/13  
OCT. 01, 2003 to AUG. 19, 2004

**% OF AVG. TOTAL PRECIPITATION VS TIME**

Rio Chama Basin (Basin Avg.)

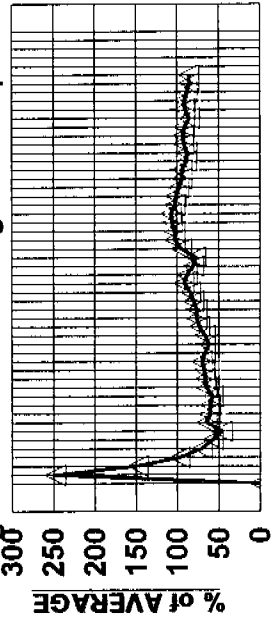


Avg = Avg of  
4 Precip. Sites

10/01  
11/03  
12/08  
01/12  
02/16  
03/22  
04/26  
05/31  
07/05  
08/09  
09/13  
OCT. 01, 2003 to AUG. 19, 2004

**% OF AVG. TOTAL PRECIPITATION VS TIME**

Sangre de Cristo Mtn Range Basins (Basin Avg.)

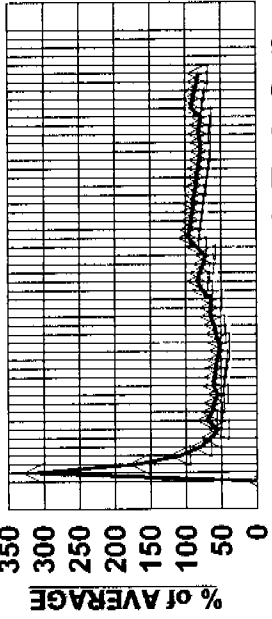


Avg = Avg of  
9 Precip. Sites

10/01  
11/03  
12/08  
01/12  
02/16  
03/22  
04/26  
05/31  
07/05  
08/09  
09/13  
OCT. 01, 2003 to AUG. 19, 2004

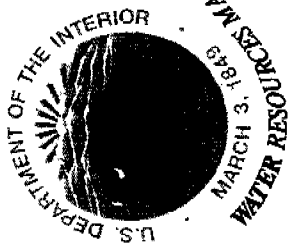
**% OF AVG. TOTAL PRECIPITATION VS TIME**

Jemez River Basin (Basin Avg.)



Avg = Avg of  
3 Precip. Sites

10/01  
11/03  
12/08  
01/12  
02/16  
03/22  
04/26  
05/31  
07/05  
08/09  
09/13  
OCT. 01, 2003 to AUG. 19, 2004



# RIO GRANDE PROJECT

## INFLOW TO ELEPHANT BUTTE RESERVOIR AT SAN MARCIAL STATIONS

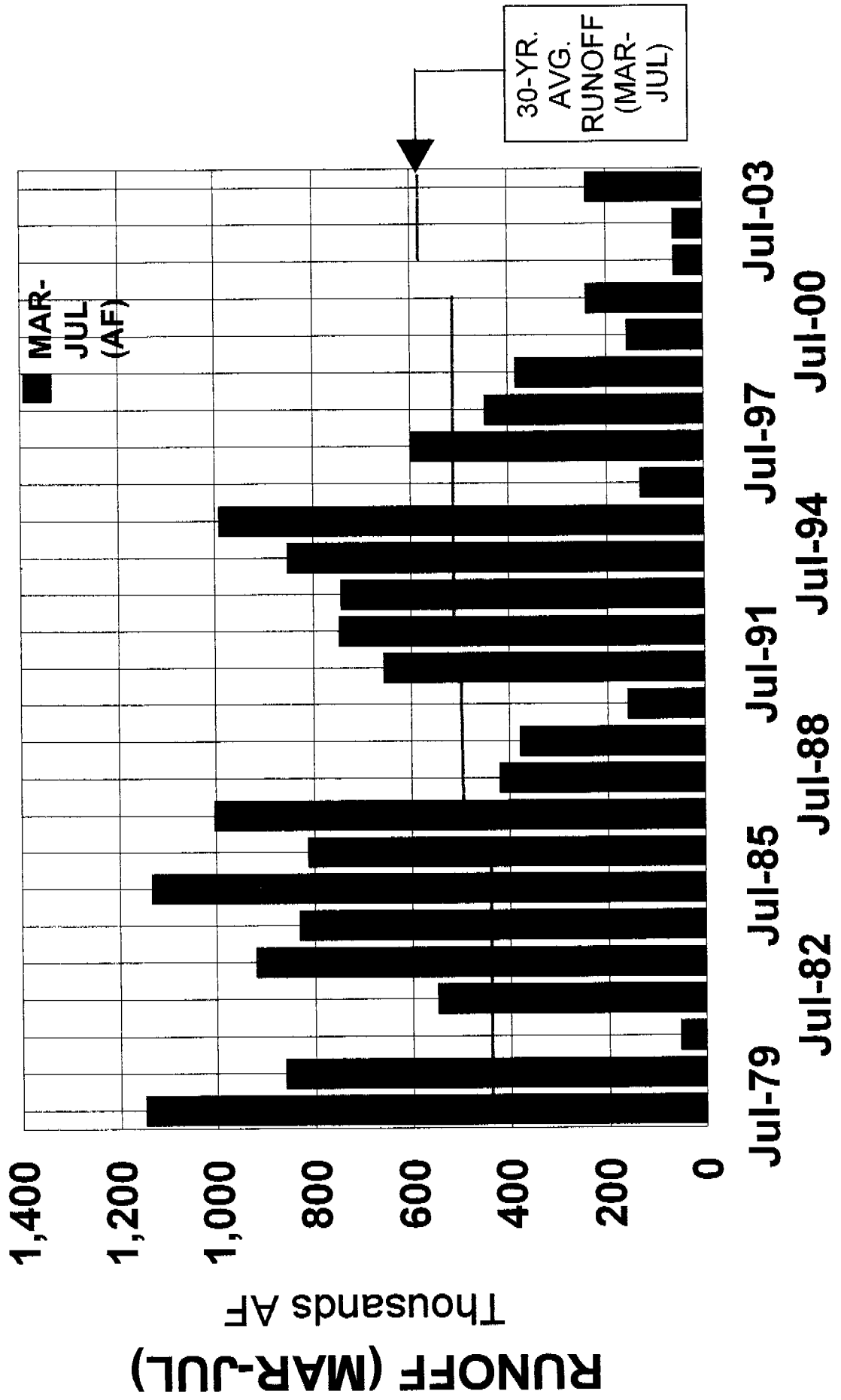
	Jan	Feb	Mar	Apr	May	Jun	Jul	Aug	Total
2004	32,000	31,000	39,000	101,000	73,000	13,000	14,000	13,900	317,000
Avg.	47,000	48,000	60,000	120,000	195,000	130,000	68,000	44,000	712,000

= 44.52% of average

Spring Runoff = 41.9% of average

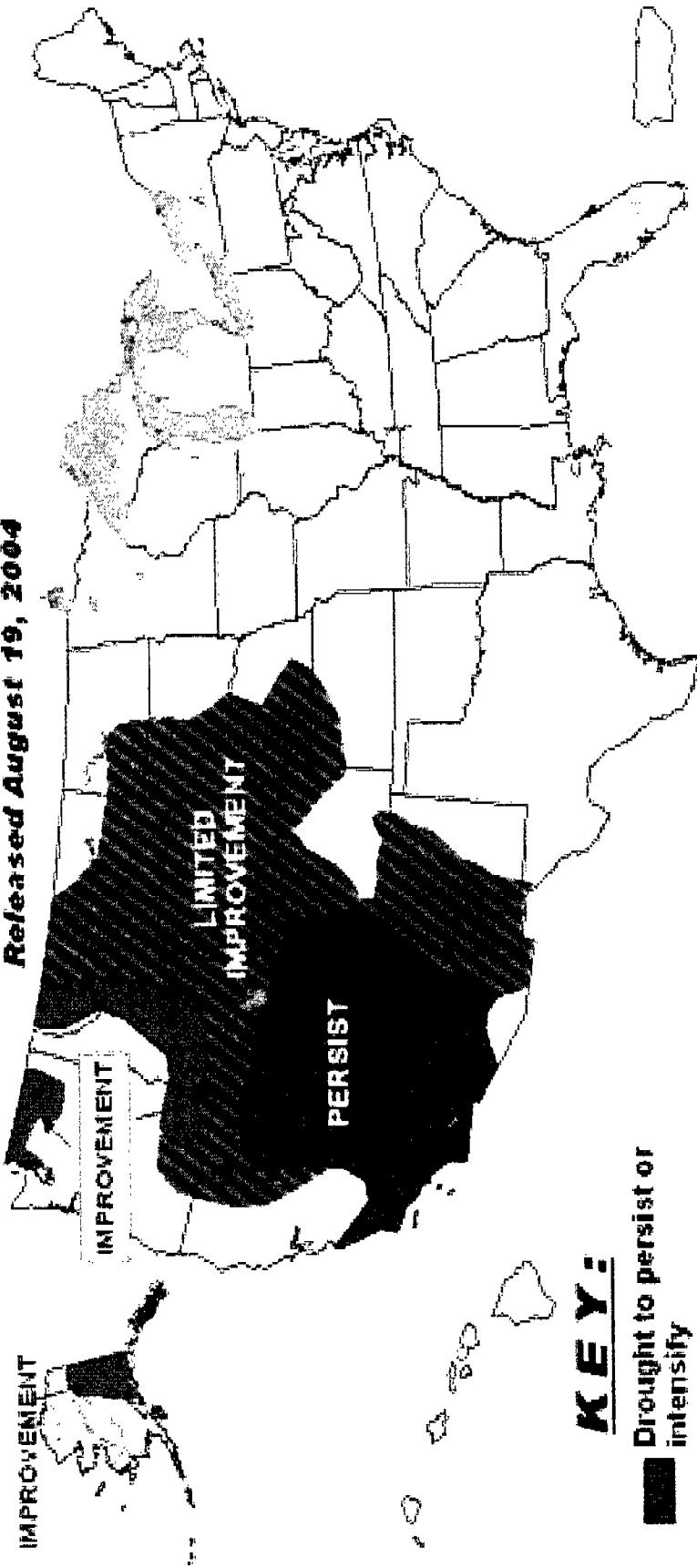
# HISTORICAL RUNOFF - SAN MARCIAL

1979 - 2004





# U.S. Seasonal Drought Outlook Through November 2004 Released August 19, 2004



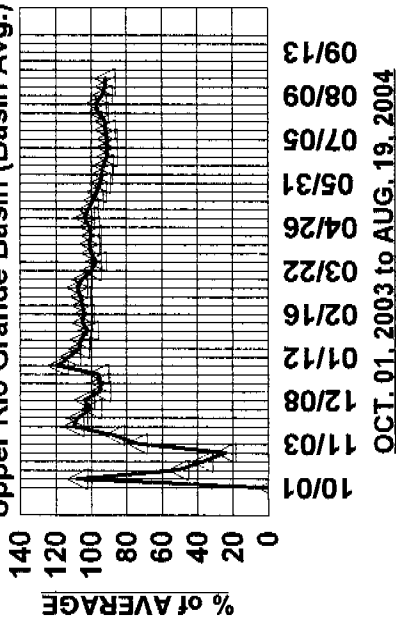
## KEY:

-  Drought to persist or intensify
-  Drought ongoing, some improvement
-  Drought likely to improve, impacts ease
-  Drought development likely

Drought outlooks are provided to aid in subjecting to more precise and guided by numerous factors, including about long-term droughts and by a number of factors. Short-term outlooks — such as 30-day outlooks — can be more accurately forecast more than a few days in advance. So use caution if using the outlooks for agricultural or such as crops — in a time period by such events. "Ongoing" drought outlooks are generally determined from the Drought Monitor (DM) to D4). For weekly drought updates, see the latest Drought Monitor and text.

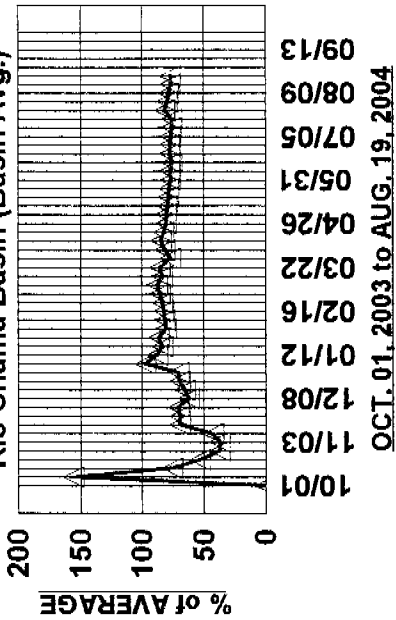
**% OF AVG. TOTAL PRECIPITATION VS TIME**

Upper Rio Grande Basin (Basin Avg.)



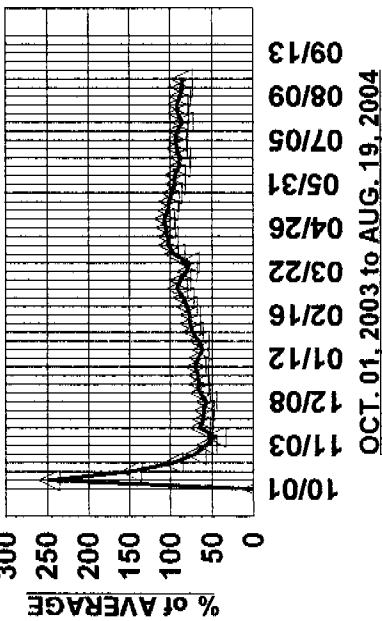
**% OF AVG. TOTAL PRECIPITATION VS TIME**

Rio Chama Basin (Basin Avg.)



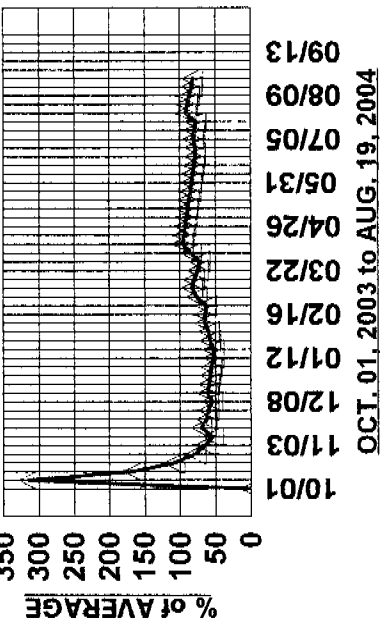
**% OF AVG. TOTAL PRECIPITATION VS TIME**

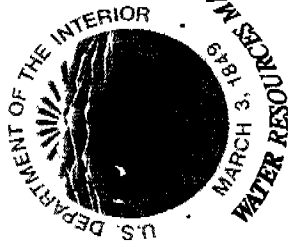
Sangre de Cristo Mtn Range Basins (Basin Avg.)



**% OF AVG. TOTAL PRECIPITATION VS TIME**

Jemez River Basin (Basin Avg.)





# RIO GRANDE PROJECT

## INFLOW TO ELEPHANT BUTTE RESERVOIR AT SAN MARCIAL STATIONS

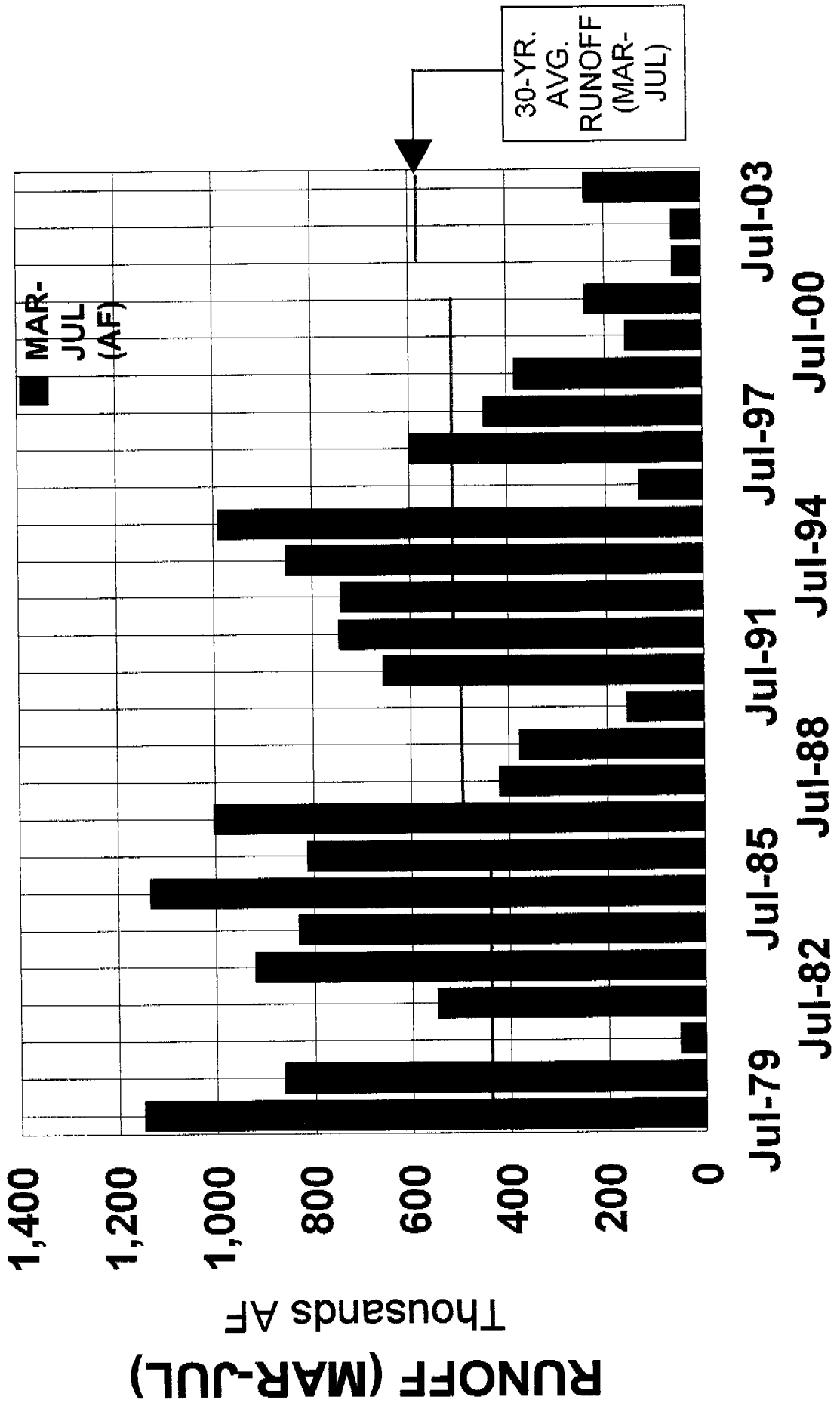
	Jan	Feb	Mar	Apr	May	Jun	Jul	Aug	Total
2004	32,000	31,000	39,000	101,000	73,000	13,000	14,000	13,900	317,000
Avg.	47,000	48,000	60,000	120,000	195,000	130,000	68,000	44,000	712,000

= 44.52% of average

Spring Runoff = 41.9% of average

# HISTORICAL RUNOFF - SAN MARCIAL

1979 - 2004

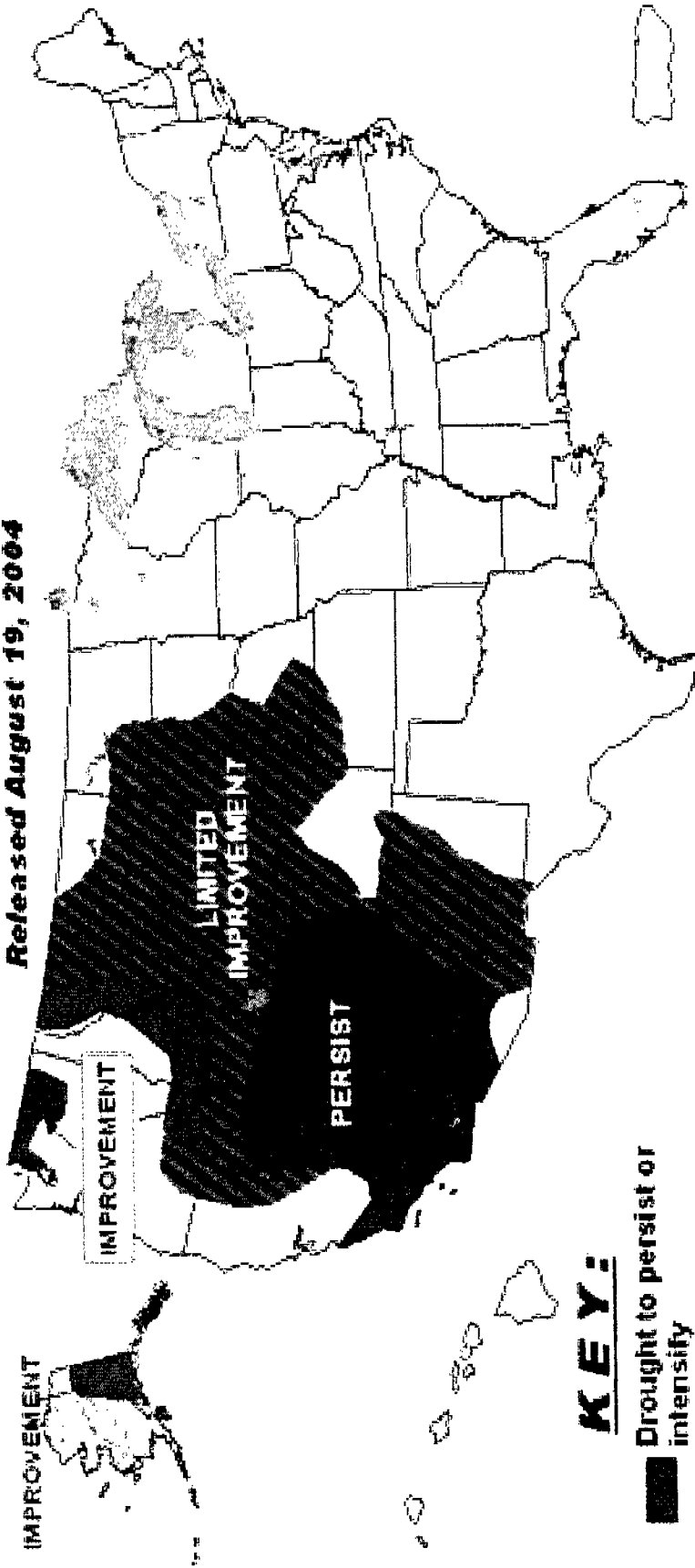







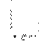
# U.S. Seasonal Drought Outlook Through November 2004 Released August 19, 2004



IMPROVEMENT



## KEY:

-  Drought to persist or intensify
-  Drought ongoing, some improvement
-  Drought likely to improve, impacts ease
-  Drought development likely

Details and general background for this outlook are available on our website. For more information, please contact the National Drought Mitigation Center at (419) 530-7100. This outlook is based on the most current information available and is subject to change as more information becomes available. For more information, please contact the National Drought Mitigation Center at (419) 530-7100. For more information, please contact the National Drought Mitigation Center at (419) 530-7100.