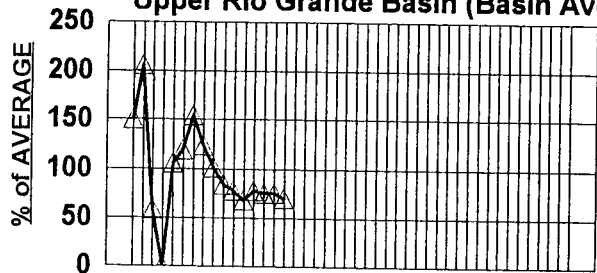


**% OF AVG. SNOW WATER EQUIVALENT vs TIME**

Upper Rio Grande Basin (Basin Avg.)



Avg = Avg of 9 SNOTEL Sites

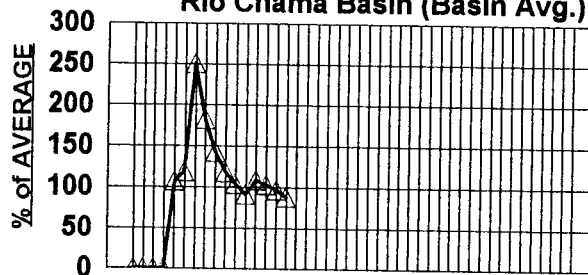
10/01 12/09 02/17 04/28 07/07

11/04 01/13 03/24 06/02

OCT. 01, 2002 - JAN. 13, 2003

**% OF AVG. SNOW WATER EQUIVALENT vs TIME**

Rio Chama Basin (Basin Avg.)



Avg = Avg of 4 SNOTEL Sites

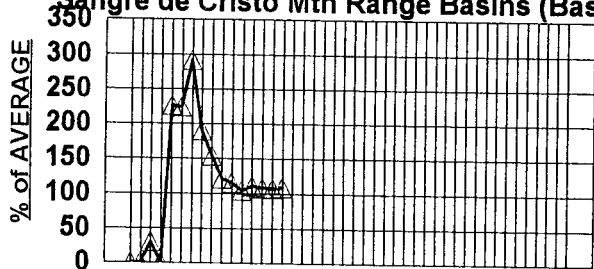
10/01 12/09 02/17 04/28 07/07

11/04 01/13 03/24 06/02

OCT. 01, 2002 to JAN. 13, 2003

**% OF AVG. SNOW WATER EQUIVALENT vs TIME**

Sangre de Cristo Mtn Range Basins (Basin Avg.)



Avg = Avg of 9 SNOTEL Sites

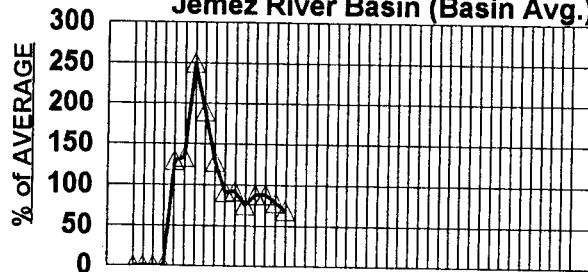
10/01 12/09 02/17 04/28 07/07

11/04 01/13 03/24 06/02

OCT. 01, 2002 to JAN. 13, 2003

**% OF AVG. SNOW WATER EQUIVALENT vs TIME**

Jemez River Basin (Basin Avg.)



Avg = Avg of 3 SNOTEL Sites

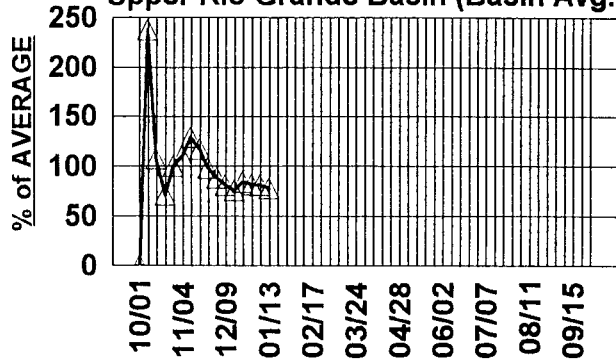
10/01 12/09 02/17 04/28 07/07

11/04 01/13 03/24 06/02

OCT. 01, 2002 to JAN. 13, 2003

**% OF AVG. TOTAL PRECIPITATION vs TIME**

Upper Rio Grande Basin (Basin Avg.)

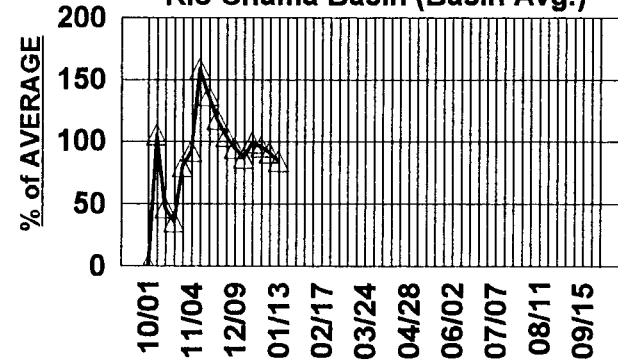


Avg = Avg of 9 Precip. Sites

OCT. 01, 2002 to JAN. 13, 2003

**% OF AVG. TOTAL PRECIPITATION vs TIME**

Rio Chama Basin (Basin Avg.)

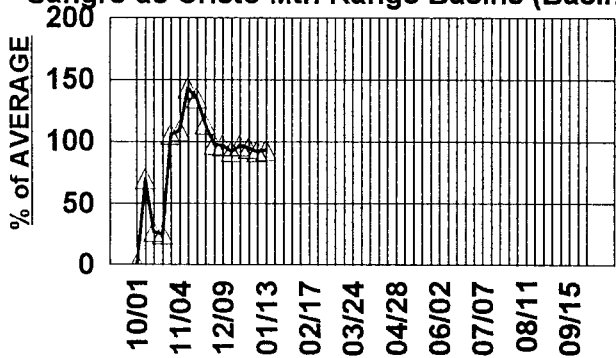


Avg = Avg of 4 Precip. Sites

OCT. 01, 2002 to JAN. 13, 2003

**% OF AVG. TOTAL PRECIPITATION vs TIME**

Sangre de Cristo Mtn Range Basins (Basin Avg.)

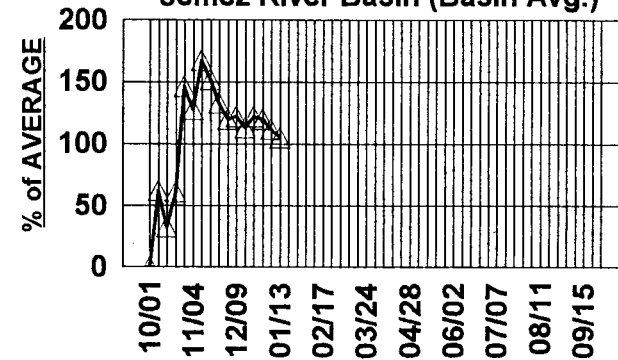


Avg = Avg of 9 Precip. Sites

OCT. 01, 2002 to JAN. 13, 2003

**% OF AVG. TOTAL PRECIPITATION vs TIME**

Jemez River Basin (Basin Avg.)



Avg = Avg of 3 Precip. Sites

OCT. 01, 2002 to JAN 13, 2003

**SPRING RUNOFF FORECASTS**

2003

**R I O G R A N D E B A S I N**

<u>FORECAST POINT</u>	<u>Rio Grande nr Del Norte</u>	<u>Rio Chama at El Vado Reservoir</u>	<u>Rio Grande at Otowi Bridge</u>	<u>Jemez River nr Jemez</u>	<u>Rio Grande at San Marcial</u>
<b>FORECAST PERIOD</b>	APR-SEP	MAR-JUL	MAR-JUL	MAR-JUL	MAR-JUL
<b>30-YEAR AVERAGE RUNOFF *</b>	531,000 AF	237,000 AF	757,000 AF	47,000 AF	573,000 AF
JANUARY 1 FORECAST	372,000 (70% of avg.)	182,000 (77%)	533,000 (70%)	40,000 (85%)	370,000 (65%)
FEBRUARY 1 FORECAST					
FEBRUARY 15 FORECAST					
MARCH 1 FORECAST					
MARCH 15 FORECAST					
APRIL 1 FORECAST					
APRIL 15 FORECAST					
MAY 1 FORECAST **					
MAY 15 FORECAST					

\* based on 1971-2000 runoff data.

\*\* last official forecast for 2003 spring runoff.