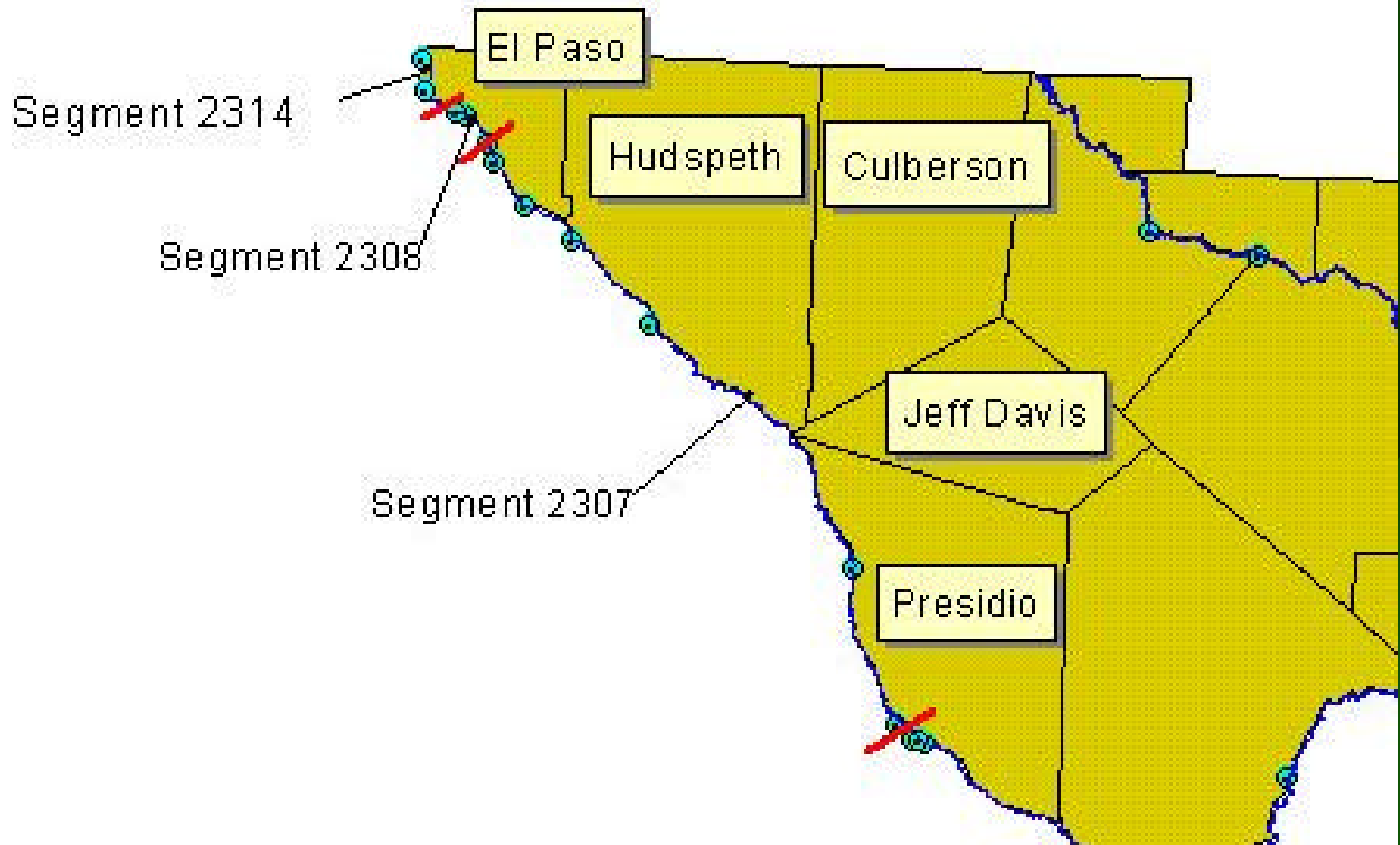


# Comparison of Water Quality Standards for the Texas Portion of the Rio Grande Project

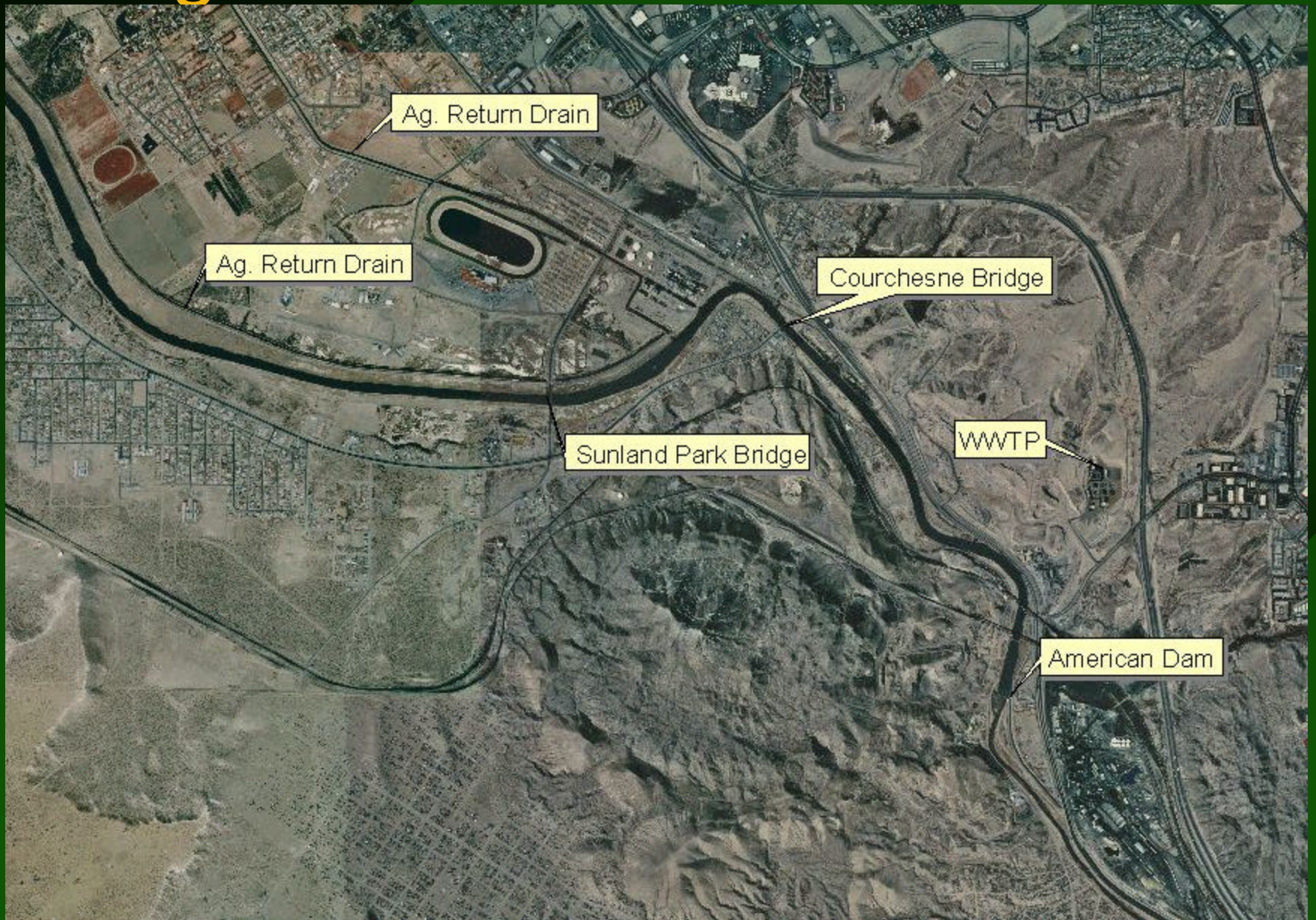
New Mexico-Texas Water  
Commission

January 24, 2002

# Rio Grande Project in Texas



# Segment 2314



# Segment 2314



# Segment 2314



# Segment 2308



# Segment 2307



# Texas Surface Water Quality Standards (TSWQS)

- State of Texas
  - Texas Administrative Code, Title 30 (Environmental Quality)
    - Chapter 220- Regional Assessments of Water Quality
    - Chapter 290- Public Drinking Water
    - Chapter 307- Texas Surface Water Quality Standards

# TSWQS

- TSWQS are designed to:
  - Establish numerical and narrative goals for water quality.
  - Provide a basis on which TNRCC and TSSWCB can establish reasonable methods to attain the state's goals for water quality.

# TSWQS

- Designated Uses:
  - Aquatic Life Use
  - Contact Recreation
  - Public Water Supply
  - Fish Consumption
    - Assessed by Texas Department of Health

# TSWQS

- Aquatic Life Use.
  - Dissolved Oxygen.
  - Dissolved metals and pesticides.
  - Biological Assessments.
    - Inventory of fish and invertebrates.
    - Habitat.

# TSWQS

- Contact Recreation.
  - E. coli.
    - Adopted in Nov 2000 as new bacterial indicator.
  - Fecal Coliform.
    - Continue to be analyzed until sufficient E. coli data is collected.

# TSWQS

- Domestic Water Supply
  - Indicate whether a water body is suitable for use as a DWS using only conventional surface water treatment.
  - Because of importance to human health, this use is further defined in the drinking water standards under the Safe Drinking Water Act (SDWA).

# TSWQS- Rio Grande Project Area

Seg. No.	Seg Name	Rec.	Aq. Life	DWS	Cl-	SO4-	TDS	D.O.	pH	Bact	Temp (F)
2314	RG above International Dam	CR	H	PS	340	600	1800	5	6.5 -9	126/ 200	92
2308	RG below International Dam	NCR	L	PS	250	450	1400	3	6.5 -9	2,000/ 2,000	95
2307	RG below Riverside Diversion Dam	CR	H	PS	300	550	1500	5	6.5 -9	126/ 200	93

# Watershed Management Approach

- Texas Clean Rivers Program (CRP).
  - IBWC administers CRP in Rio Grande basin through agreement with TNRCC (1998).
  - Establishes basin-wide monitoring program.
  - Quality Assurance Project Plan.

# Watershed Management Approach

- Formation of partnerships with local agencies, academia, and the public:
  - El Paso Water Utilities
  - UTEP, NMSU, EPCC, Texas A&M- El Paso
  - EBID, EPCWID#1
  - TNRCC- El Paso
  - IBWC Field Office
  - Project del Rio

# Water Quality Inventories

- CWA 305(b) Report.
  - Biennial report prepared by TNRCC.
  - Data collected under CRP, Surface Water Quality Monitoring (SWQM), and finished water (drinking) databases.
  - “Guidance for Assessing Surface Water Quality and Finished Drinking Water Quality Data”.

# Water Quality Inventories

- CWA 303 (d) list (TMDL list)
  - List of impaired water bodies (segments)
  - Six segments listed in Rio Grande basin

# Water Quality Data for Rio Grande basin

- Texas Clean Rivers Program Database
  - IBWC Homepage: [www.ibwc.state.gov](http://www.ibwc.state.gov)
- TRACS Database
  - TNRCC Website: [www.tnrcc.state.tx.us](http://www.tnrcc.state.tx.us)